



The Global Language of Business

eSubmission for Nutritional Images Item Certification

Requirements to submit artwork for
Nutritional Images updates

September 20, 2017



Conditions/Requirements to Submit Artwork to update Item Certification Nutrition

Requirements:

- The Planogram service was performed prior and up to date
- What is being submitted matches the current images available
- Readability and completeness of the supplied images to capture the data
- Presence of the GTIN (barcode) on the samples is required
 - If product was previously submitted for eCommerce older version will becomes obsolete
 - you must update the eCommerce Partners Service Bundle

Accepted digital files includes:

- Artwork files
- Images of the product – if artwork is a label covering partially the product

File naming:

- Every image must be name with the GTIN (12 or 13 digit code)
- Follow the GTIN (0123456789876.PDF, gtin-front, etc) – ***ensure the GTIN is accurate.***

Conditions To Submit Artwork and Print Proofs

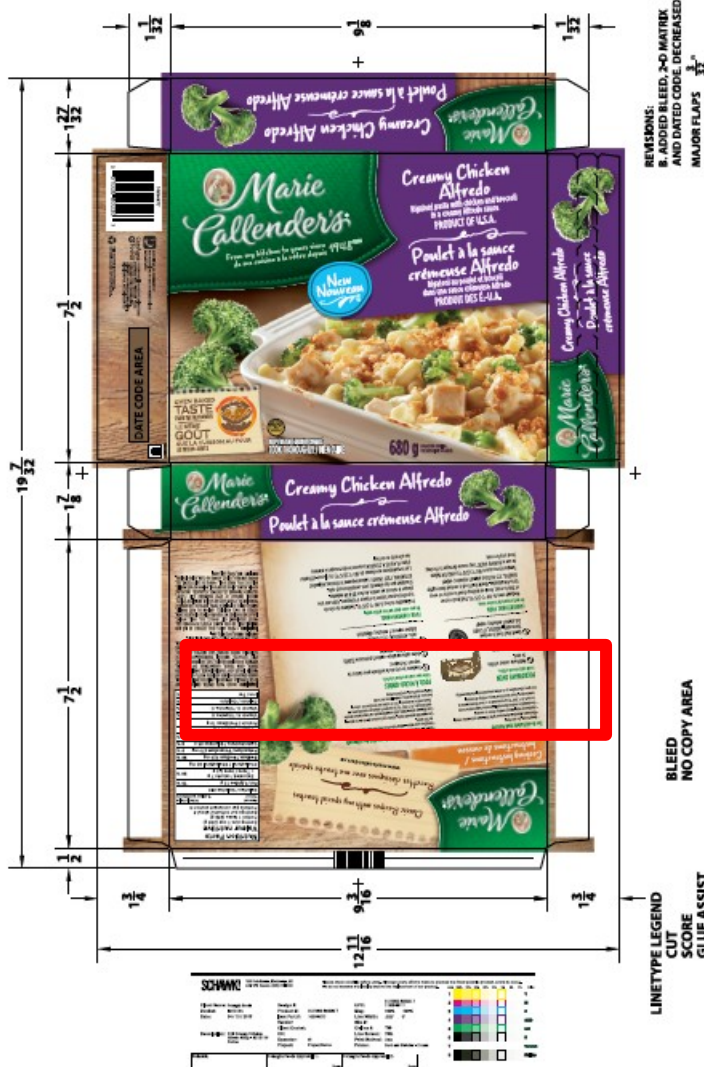
Image Requirements:

- The Artwork must be of good quality (resolution) to be able to zoom in and read everything easily.
- The Artwork cannot have package cut-outs that would normally show the product inside (windows, cut-outs), as it will prevent being able to create a final product image for advertizing
- The Artwork must be give final version, no varnish effect layer on top of text.
- The Artwork must have a barcode

Prerequisites:

- Complete artwork = Yes
- Readability = Yes
- GTIN present = Yes

Artwork – complete and quality file



FOUR À MICRO-ONDES
Cuire une seule portion à la fois.

- Garder au congélateur. Ne pas décongeler.
- Directives pour micro-ondes élaborées avec des fours micro-ondes de 1100 watts.
- Les appareils peuvent varier. Ajuster au besoin la durée de la cuisson.
- Les aliments doivent être cuits complètement. La température interne doit atteindre 74 °C (165 °F); la mesurer à plusieurs endroits avec un thermomètre à aliments. Lire et suivre les directives de cuisson. Pour plus d'information, rendez-vous sur le site www.conagrafoods.com/mwcooking

① Soulever le coin de la pellicule pour laisser la vapeur s'échapper.
② Faire cuire au micro-ondes à puissance ÉLEVÉE

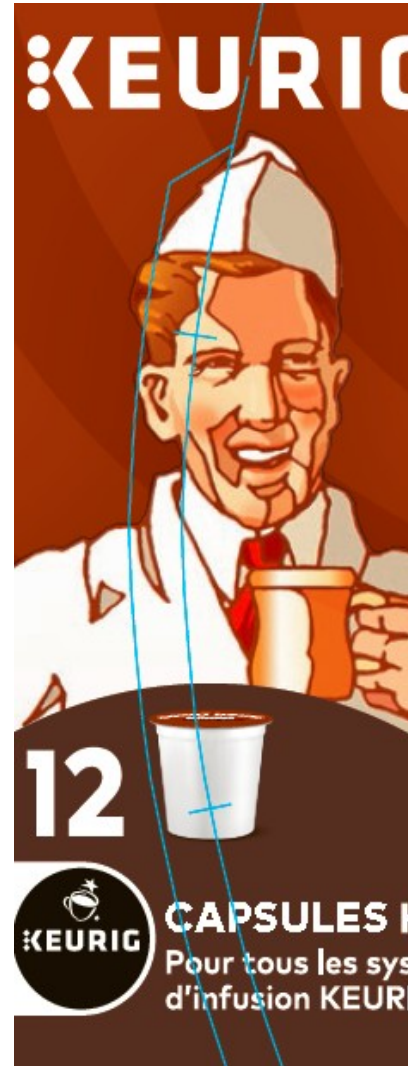
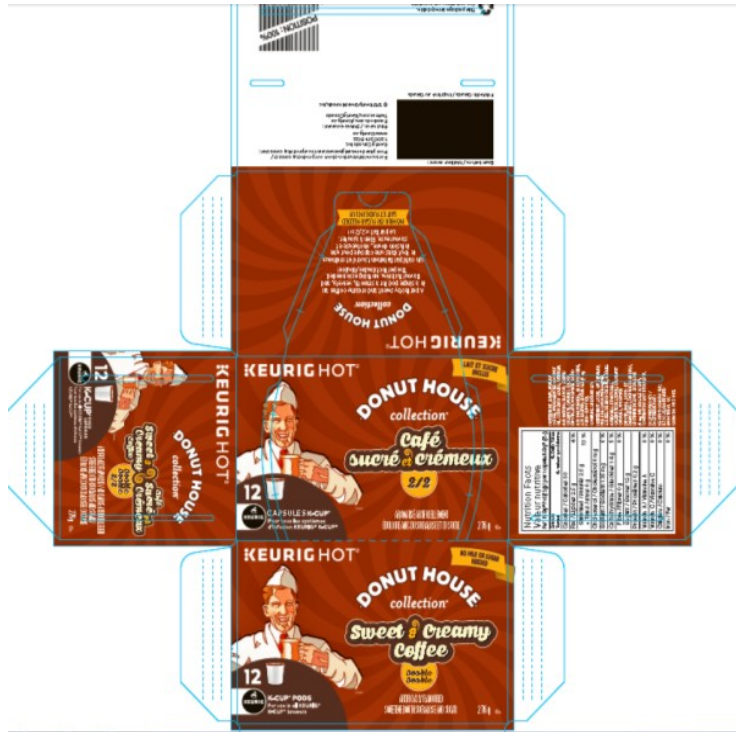
Sugars / Sucres	3 g
Protein / Protéines	19 g
Vitamin A / Vitamine A	2 %
Vitamin C / Vitamine C	10 %
Calcium / Calcium	15 %
Iron / Fer	8 %

INGREDIENTS: COOKED PASTA (WATER, ENRICHED DURUM WHEAT SEMOLINA, SOYBEAN OIL, DRIED EGG WHITES), WATER, COOKED SEASONED CHICKEN (CHICKEN, WATER, OLIVE OIL, SOY PROTEIN ISOLATE (SOY PROTEIN ISOLATE, MODIFIED POTATO STARCH, CORN STARCH, CARRAGEENAN, SOY LECITHIN), DEXTROSE, POTASSIUM CHLORIDE, SALT, SODIUM PHOSPHATES, SPICE EXTRACTS), BROCCOLI, PARMESAN-STYLE CHEESE (SWISS MILK, CHEESE CULTURE, SALT, ENZYMES, CELLULOSE)

Complete artwork = Yes
 Readability = Yes
 GTIN present = Yes
 *Crop marks don't interfere with data on pack



Artwork with cuts and no GTIN



Complete artwork = Yes
 Readability = Yes
 GTIN present = No
 Crop marks interfere on product data = No



Artwork complete and quality

The barcode is not final,
but the full GTIN is
readable for validation



Complete artwork = Yes
Readability = Yes
GTIN present = Yes
2D Image capable = Yes



Submitting Artwork



eSubmission form



- Please use the eSubmission form
- Follow the instructions provided on the form
- Do not exceed 50 GTINs per eSubmission
- The Nutritional Image Service for Item Certification will be invoiced for each GTIN processed



**For more information on eSubmissions, please
contact: info@gs1ca.org**