

SmartLabel™ Extract



Save time by leveraging the data you already have!

ECCnet Nutritional Content is a certification solution powered by TrueSource™. GS1 Canada has partnered with Food & Consumer Products of Canada (FCPC) to leverage the content you have already certified through this solution for use in SmartLabel™ webpage templates.

SmartLabel™ consumer webpages will be developed by brand owners using FCPC stylesheets or by engaging authorized solution providers. Whether being done in house or through a solution provider, GS1 Canada’s SmartLabel™ Extract service can provide the content you have already certified for faster, more efficient development of your SmartLabel™ webpages. Content consistency across platforms also ensures you are maintaining data quality for your products.

Need help finding an authorized solution provider? Learn about GS1 Canada’s Authorized Partner Program.

Authorized Partner Program

GS1 Canada has established an Authorized Partner Program to ensure subscribers have access to solution providers who are trained, authorized and have proven capabilities to implement global standards and maintain data excellence. The goal of the program is to evaluate solution providers on their:

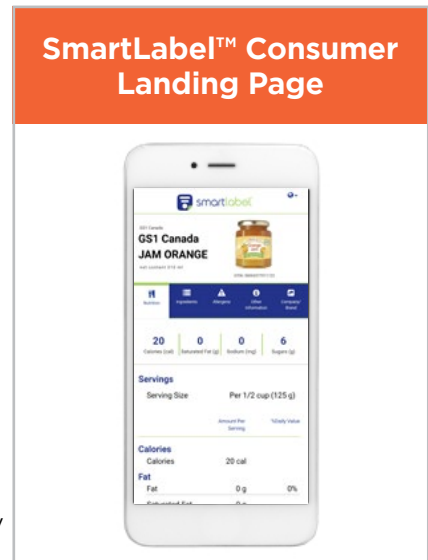
- Ability to provide a seamless experience for our users,
- Data capabilities and value of service,
- Ability to deliver on capabilities,
- Data mapping and API requirements, and
- Testing and assessment of their submitted agency records and documents.

GS1 Canada will work with solution providers to provide education on Data Governance Standards and how to support associated Policies and Procedures.

Want to Become an Authorized Partner?

Step 1: Register with GS1 Canada as an Associate and become a subscriber today

Step 2: Contact GS1 Canada to set up a workshop and begin the process of becoming an Authorized Partner





ECCnet Data Excellence Powered by TrueSource™

As directed by industry, GS1 Canada is the global leader in data excellence. All of GS1 Canada’s solutions, tools and services are powered by TrueSource™, our commitment to being the one source of truth for complete and reliable product data and image content.

Our commitment to data excellence is foundational to all of our solutions and drives the ongoing development of data excellence tools and processes, including our product certification processes.

Visit www.gs1ca.org or email us at info@gs1ca.org